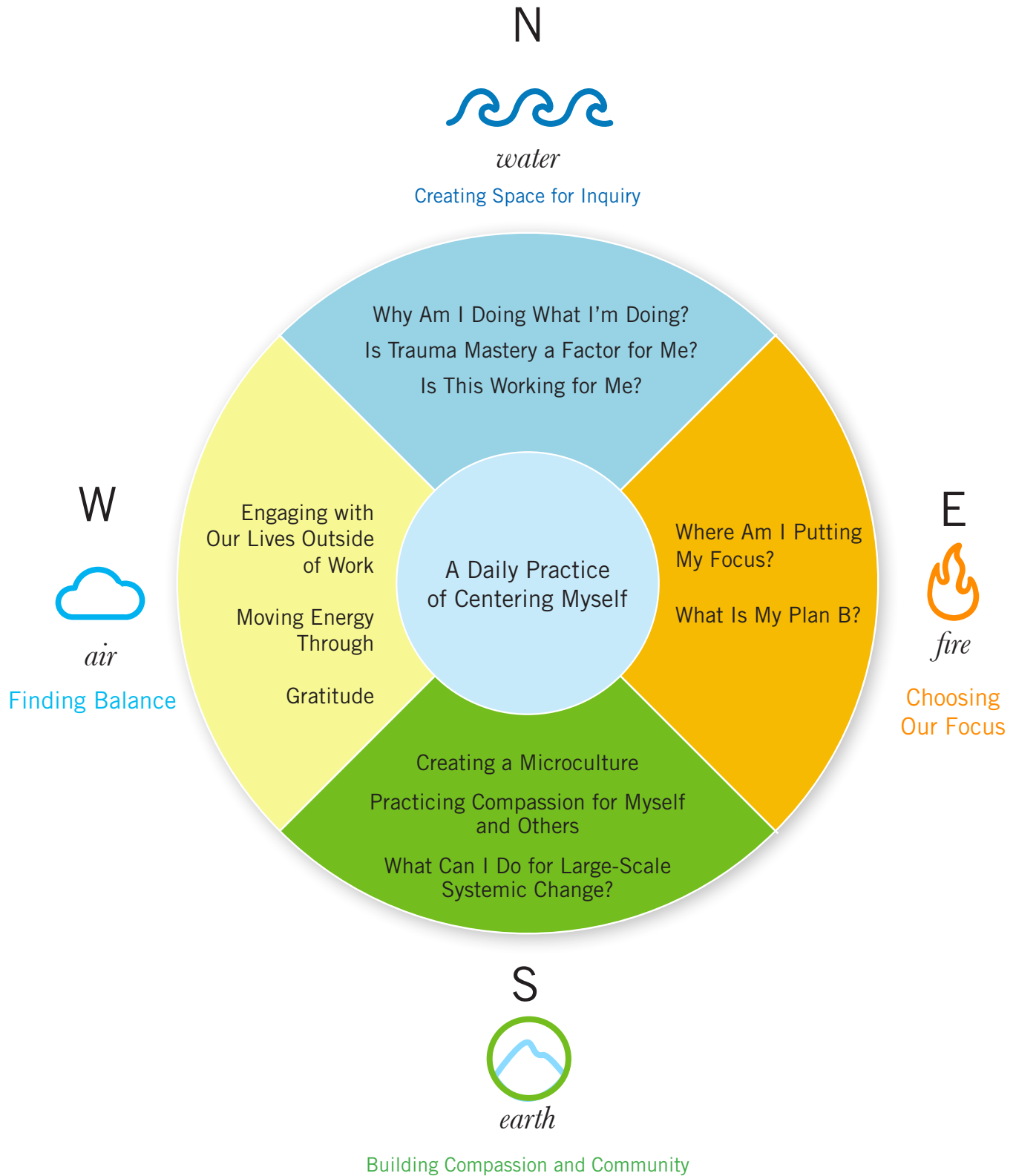


# The *five* Directions



## *Trauma Stewardship*

A daily practice through which individuals, organizations, and societies tend to the hardship, pain, or trauma experienced by humans, other living beings, or our planet itself. By developing the deep sense of awareness needed to care for ourselves while caring for others and the world around us, we can greatly enhance our potential to work for change, ethically and with integrity, for generations to come.